

Raytec DiscoMan

Release Notes

© Raytec Ltd 2025

Contents

1	Release Version v2.1.0.0 – March 2025	3
1.1.	New Features	3
1.2.	Removed Features	3
1.3.	Fixed Issues	3
2	Release Version v2.0.0.1 – June 2023.....	4
2.1.	New Features	4
2.2.	Removed Features	6
2.3.	Fixed Issues	6
3	Release Version v1.0.5.0 – Sept 2021	7
3.1.	New Features	7
3.2.	Removed Features	7
3.3.	Fixed Issues	7
4	Release Version v1.0.3.1 – June 2020.....	8
4.1.	New Features	8
4.2.	Removed Features	8
4.3.	Fixed Issues	8

1 Release Version v2.1.0.0 – March 2025

1.1. New Features

- To comply with new cyber security act, default passwords are no longer accepted in the Lamp Access feature.
- Also, to modify the name, group of the Lamp, access to the lamp is required.

1.2. Removed Features

- None

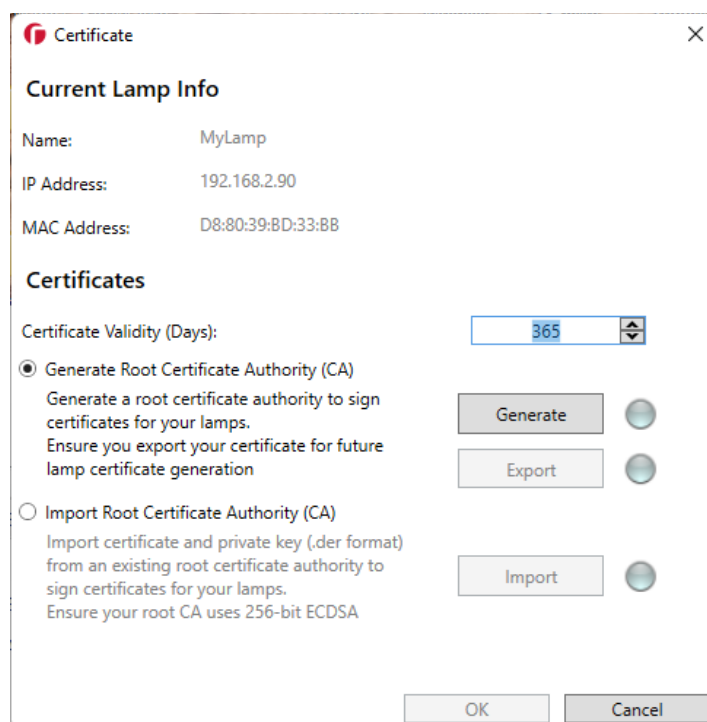
1.3. Fixed Issues

- None

2 Release Version v2.0.0.1 – June 2023

2.1. New Features

- Become your own Certificate Authority (CA) or import an existing CA to create HTTPS certificates and upload them to lamps.

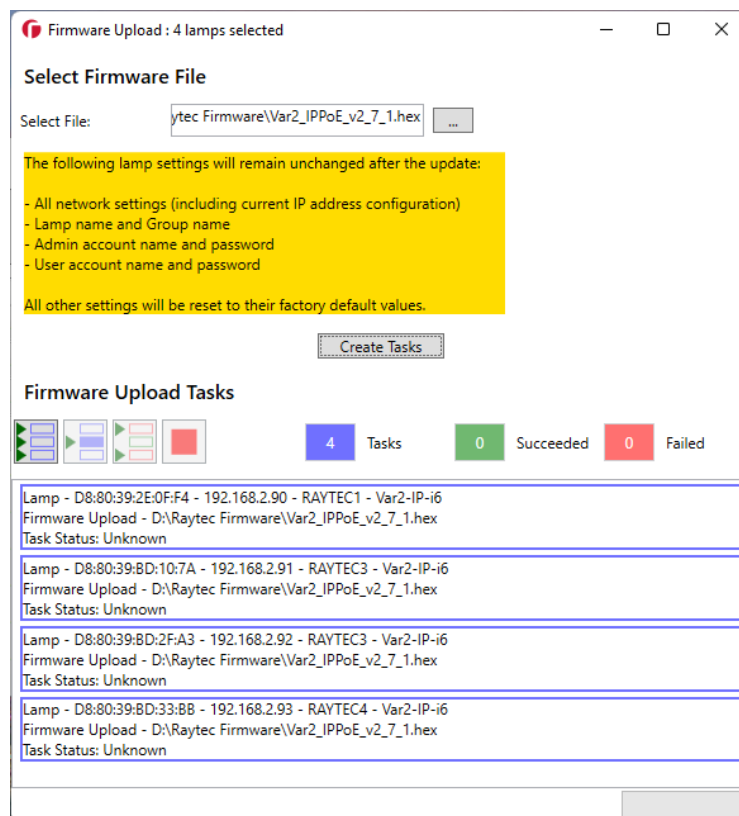


Our latest lamp firmware now supports HTTPS and DiscoMan has been updated to make it as easy as possible to make all your lamps secure.

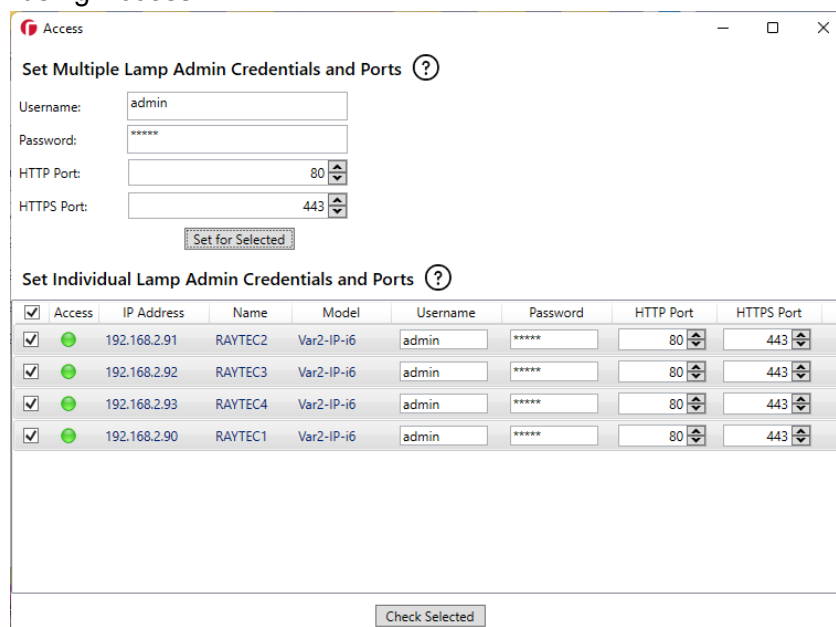
Supported firmware versions.

Lamp	Firmware
Vario2 IPPoE	v2.7.1 and above
Vario2 Hybrid IPPoE	v3.6.9 and above
Vario2 16 IPPoE	v6.2.0 and above
Vario2 Hybrid 16 IPPoE	v7.2.0 and above

- Upgrade the firmware of multiple lamps at once.



- Use Config, and new Certificates and Firmware Upload features, at any time using Access.

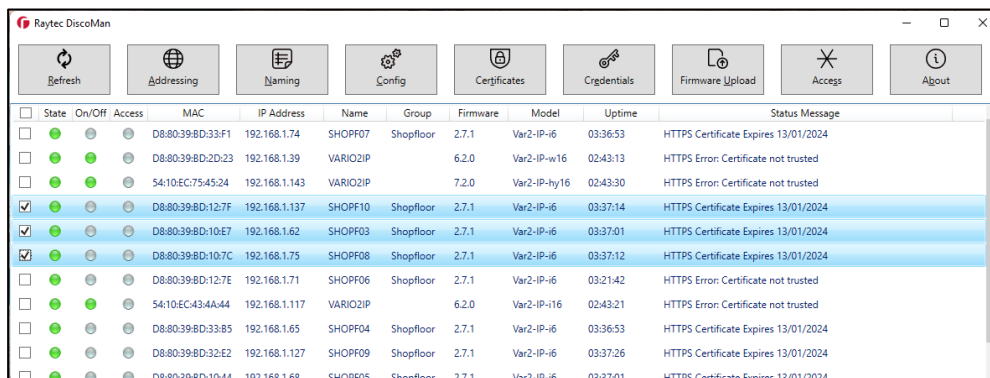


Previously, Config could only be used when the lamp had default credentials. DiscoMan now provides support for HTTPS certificates and as such it needs to be able to update lamps when these expire so the Access feature has

been added to allow users to provide admin credentials for lamps to allow all features of DiscoMan to be used at any time.

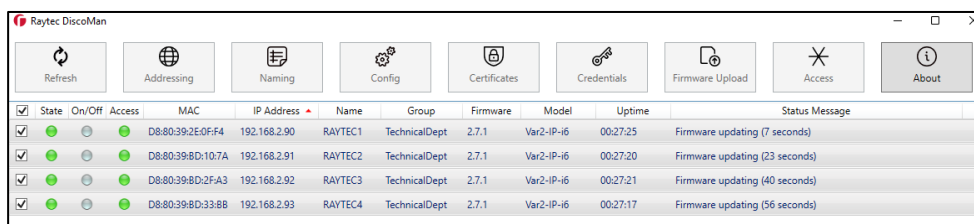
- New Status Message column

The main use of this column is to provide the status of the HTTPS certificate of the lamp.



State	On/Off	Access	MAC	IP Address	Name	Group	Firmware	Model	Uptime	Status Message
<input type="checkbox"/>			D8:80:39:BD:33:F1	192.168.1.74	SHOPF07	Shopfloor	2.7.1	Var2-IP-i6	03:36:53	HTTPS Certificate Expires 13/01/2024
<input type="checkbox"/>			D8:80:39:BD:2D:23	192.168.1.39	VARIO2IP		6.2.0	Var2-IP-w16	02:43:13	HTTPS Error: Certificate not trusted
<input type="checkbox"/>			54:10:EC:75:45:24	192.168.1.143	VARIO2IP		7.2.0	Var2-IP-hy16	02:43:30	HTTPS Error: Certificate not trusted
<input checked="" type="checkbox"/>			D8:80:39:BD:12:7F	192.168.1.137	SHOPF10	Shopfloor	2.7.1	Var2-IP-i6	03:37:14	HTTPS Certificate Expires 13/01/2024
<input checked="" type="checkbox"/>			D8:80:39:BD:10:E7	192.168.1.62	SHOPF03	Shopfloor	2.7.1	Var2-IP-i6	03:37:01	HTTPS Certificate Expires 13/01/2024
<input checked="" type="checkbox"/>			D8:80:39:BD:10:7C	192.168.1.75	SHOPF08	Shopfloor	2.7.1	Var2-IP-i6	03:37:12	HTTPS Certificate Expires 13/01/2024
<input type="checkbox"/>			D8:80:39:BD:12:7E	192.168.1.71	SHOPF06	Shopfloor	2.7.1	Var2-IP-i6	03:21:42	HTTPS Error: Certificate not trusted
<input type="checkbox"/>			54:10:EC:A3:4A:44	192.168.1.117	VARIO2IP		6.2.0	Var2-IP-i16	02:43:21	HTTPS Error: Certificate not trusted
<input type="checkbox"/>			D8:80:39:BD:33:85	192.168.1.65	SHOPF04	Shopfloor	2.7.1	Var2-IP-i6	03:36:53	HTTPS Certificate Expires 13/01/2024
<input type="checkbox"/>			D8:80:39:BD:32:E2	192.168.1.127	SHOPF09	Shopfloor	2.7.1	Var2-IP-i6	03:37:26	HTTPS Certificate Expires 13/01/2024
<input type="checkbox"/>			D8:80:39:BD:10:44	192.168.1.68	SHOPF05	Shopfloor	2.7.1	Var2-IP-i6	03:37:01	HTTPS Certificate Expires 13/01/2024

The column is also used during firmware uploads to provide an update on the status of these.



State	On/Off	Access	MAC	IP Address	Name	Group	Firmware	Model	Uptime	Status Message
<input checked="" type="checkbox"/>			D8:80:39:2E:0F:F4	192.168.2.90	RAYTEC1	TechnicalDept	2.7.1	Var2-IP-i6	00:27:25	Firmware updating (7 seconds)
<input checked="" type="checkbox"/>			D8:80:39:BD:10:7A	192.168.2.91	RAYTEC2	TechnicalDept	2.7.1	Var2-IP-i6	00:27:20	Firmware updating (23 seconds)
<input checked="" type="checkbox"/>			D8:80:39:BD:2F:A3	192.168.2.92	RAYTEC3	TechnicalDept	2.7.1	Var2-IP-i6	00:27:21	Firmware updating (40 seconds)
<input checked="" type="checkbox"/>			D8:80:39:BD:33:8B	192.168.2.93	RAYTEC4	TechnicalDept	2.7.1	Var2-IP-i6	00:27:17	Firmware updating (56 seconds)

- Ports provided in Access used when opening web interfaces of lamps.

The ports provided in Access are used when the user double-clicks a lamp to open its web interface. If the lamp has a valid HTTPS certificate, the web interface will be opened at the secure HTTPS port.

2.2. Removed Features

None

2.3. Fixed Issues

None

3 Release Version v1.0.5.0 – Sept 2021

3.1. New Features

None

3.2. Removed Features

None

3.3. Fixed Issues

Amended DiscoMan software to use updated Raytec API.

The Raytec API has been updated to scan all available networks for lamps rather than just the first one it sees.

4 Release Version v1.0.3.1 – June 2020

Initial release

4.1. New Features

N/A

4.2. Removed Features

N/A

4.3. Fixed Issues

N/A